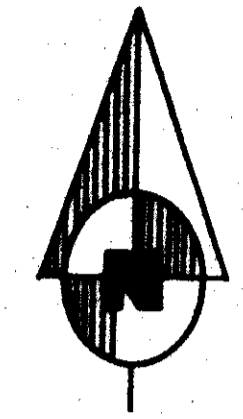


# MUIRFIELD - PLAT NO. 5 OF PALM BEACH POLO AND COUNTRY CLUB WELLINGTON - P. U. D.

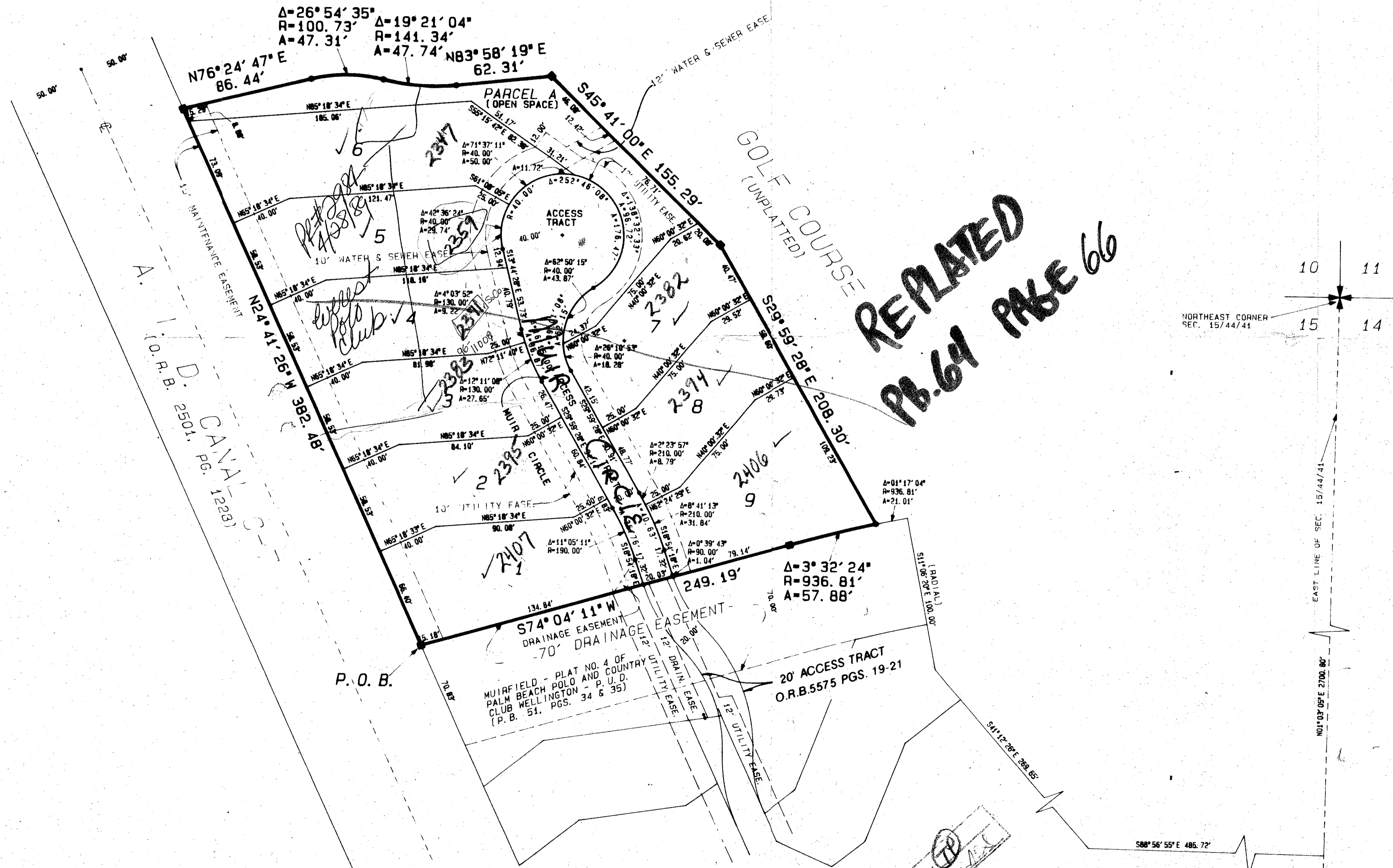
IN SECTION 15, TWP. 44S., RNG. 41E.

PALM BEACH COUNTY, FLORIDA.

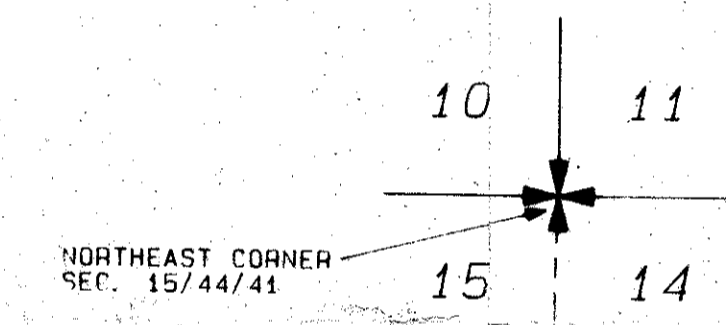
APRIL 1988  SHEET 2 OF 2 SHEETS  
GRAPHIC SCALE - 1" = 40'



GOLF COURSE  
(UNPLATTED)



**RELATED  
Pg. 64 PAGE 66**



### NOTES


- DENOTES PERMANENT REFERENCE MONUMENT
- ALL BEARINGS SHOWN HEREON ARE RELATIVE TO AN ASSUMED MERIDIAN USED THROUGHOUT WELLINGTON - P.U.D. THE WEST LINE OF SECTION 14-44-41 IS ASSUMED TO BEAR NORTH 01°03'05" EAST.
- BUILDING SETBACK LINES SHALL BE AS REQUIRED BY PALM BEACH COUNTY ZONING REGULATIONS.
- NO BUILDINGS, NOR ANY KIND OF CONSTRUCTION, SHALL BE PLACED ON UTILITY, DRAINAGE, WATER, OR SEWER EASEMENTS.
- NO STRUCTURES, TREES OR SHRUBS SHALL BE PLACED IN THE DRAINAGE, MAINTENANCE, OR UTILITY EASEMENTS FOR WATER OR SEWER.
- APPROVAL OF LANDSCAPING ON UTILITY EASEMENTS OTHER THAN WATER AND SEWER SHALL BE ONLY WITH THE APPROVAL OF ALL UTILITIES OCCUPYING SAME.
- WHERE DRAINAGE, UTILITY, WATER, OR SEWER EASEMENTS CROSS, DRAINAGE EASEMENTS SHALL TAKE PRECEDENCE.
- ACHE IMPROVEMENT DISTRICT SHALL HAVE THE RIGHT TO CONSTRUCT AND MAINTAIN WATER AND SEWER FACILITIES WITHIN UTILITY EASEMENTS, AND ACCESS TRACTS AS SHOWN HEREON.
- THERE MAY BE ADDITIONAL RESTRICTIONS THAT ARE NOT RECORDED ON THIS PLAT THAT MAY BE FOUND IN THE PUBLIC RECORDS OF PALM BEACH COUNTY, FLORIDA.
- THERE MAY BE ADDITIONAL RESTRICTIONS WHICH ARE NOT RECORDED ON THIS PLAT THAT MAY BE FOUND IN THE PUBLIC RECORDS OF PALM BEACH COUNTY, FLORIDA.

TAZ 728  
gd master  
SUBDIVISION # Muirfield #5  
BOOK 160 PAGE 136  
FLOOD ZONE 13  
QUAD #77  
PUD MAP # 10026

MUIRFIELD #5 OF P.B. P. & CC

60/136

0332-068

 **Bailey-Fotopay, inc.**  
land surveyors, planners, engineers  
5050 10th Avenue North, Suite B - Lake Worth, Florida 33463  
Phone 305-995-0707